

JOSHUA 13



WHEN

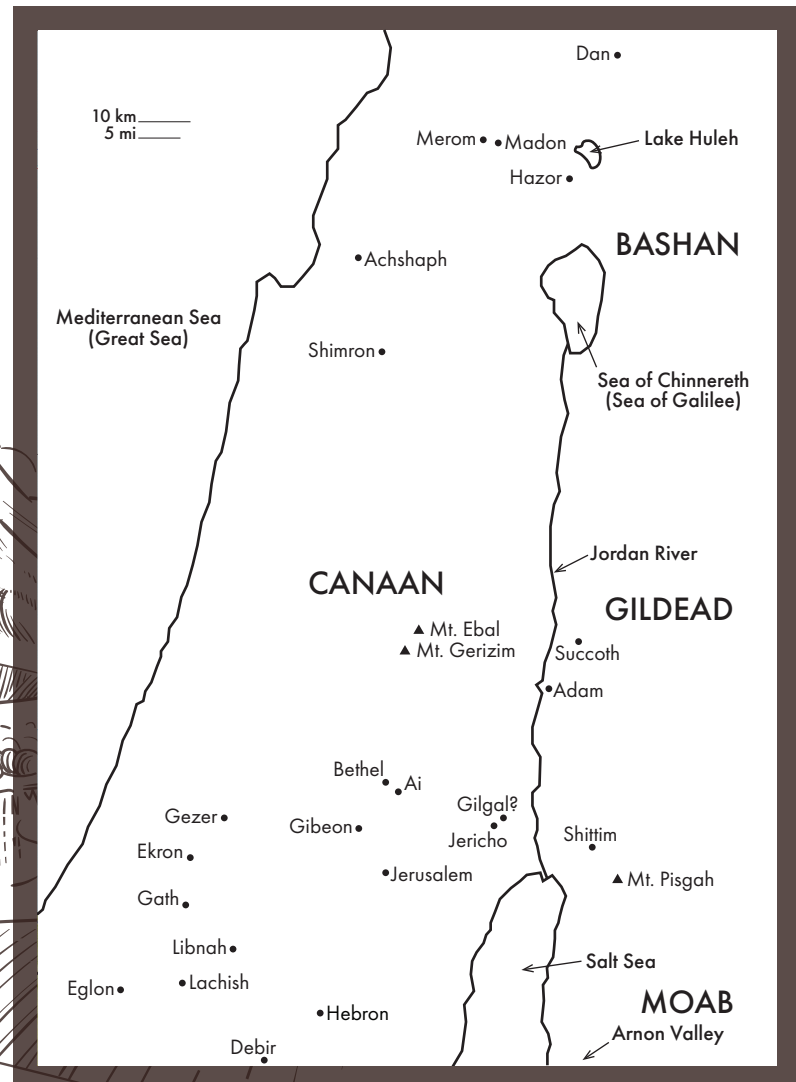
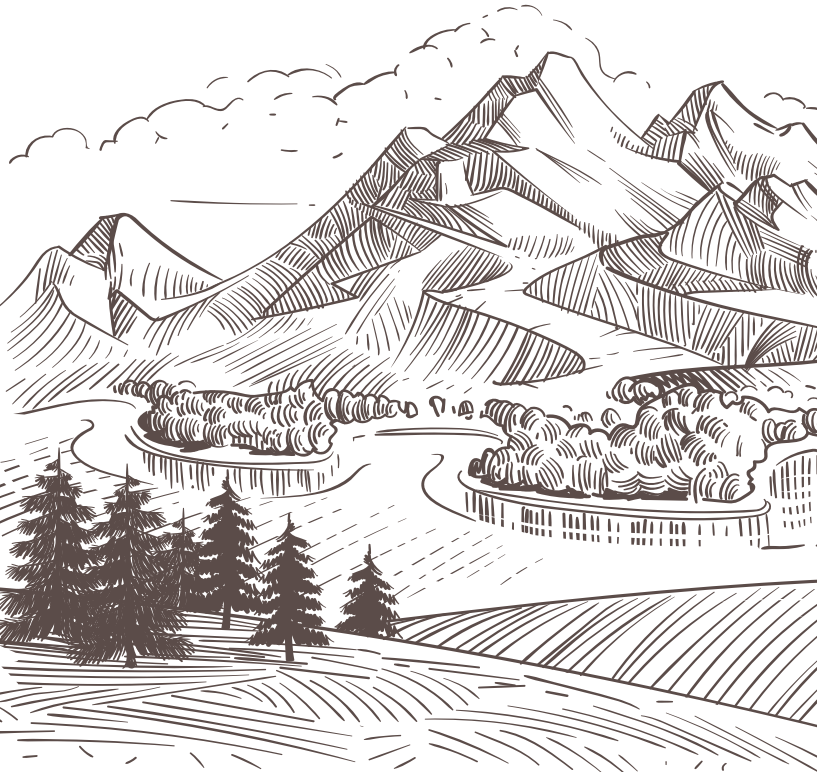
- Israel's conquest of the Promised Land began around 1450 B.C. and lasted approximately 5-7 years.

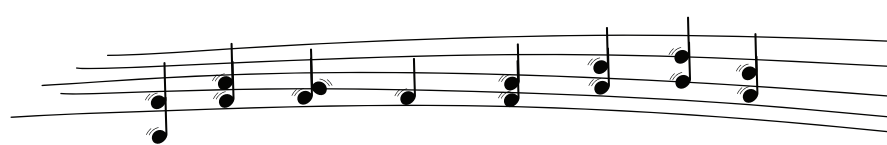
CHARACTERS

- **Joshua** - Moses' long-time assistant. God selected Joshua to lead the Israelites into the Promised Land after Moses' death.
- **Moses** - Moses was the leader of the Israelites before Joshua. God used Moses to free the Israelites from Egyptian slavery and to lead them to the border of the Promised Land.

WHERE

- This chapter opens with a discussion between God and Joshua about the areas of the Promised Land that still needed to be conquered.
- The second half of Joshua 13 describes how the land east of the Jordan River was divided between Reuben, Gad, and half the tribe of Manasseh.





TO CANAAN'S LAND I'M ON MY WAY...

OUTLINE

- JOSHUA IS TOLD TO DIVIDE UP THE PROMISED LAND (13:1-14):
 - + God spoke with Joshua when he was old and reminded him there was still a lot of territory to conquer in the Promised Land.
 - + God promised to give the Israelites the land and told Joshua to divide all the lands west of Jordan between the 9 ½ remaining tribes.
 - + The tribe of Levi didn't receive a portion of land because they were dedicated to the service of God and received a portion of the sacrifices offered in the Tabernacle.
 - + The tribes of Reuben, Gad, and half the tribe of Manasseh received land on the east side of the Jordan River.
- THE LAND OF REUBEN (13:15-23):
 - + These verses outline the borders of the land inheritance received by the tribe of Reuben.
- THE LAND OF GAD (13:24-28):
 - + These verses outline the borders of the land inheritance received by the tribe of Gad.
- THE LAND OF HALF THE TRIBE OF MANASSEH (13:29-33):
 - + These verses outline the borders of the land inheritance received by the half tribe of Manasseh that settled east of Jordan.

