

JOSHUA 16



WHEN

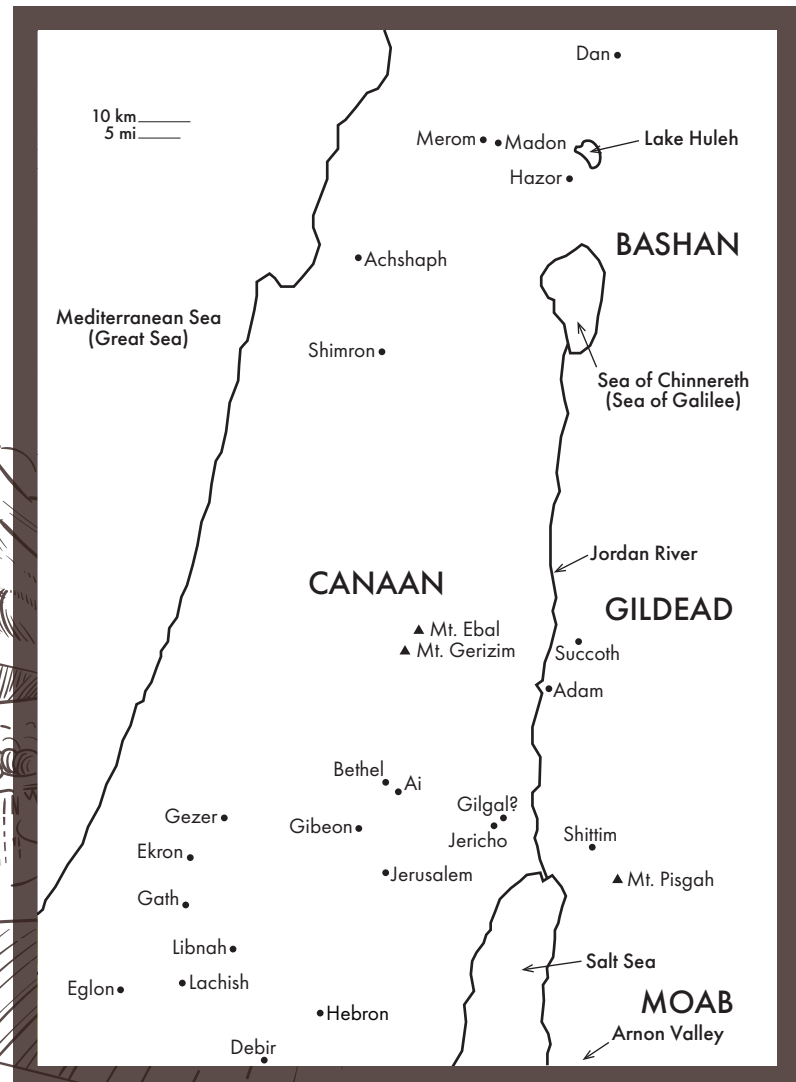
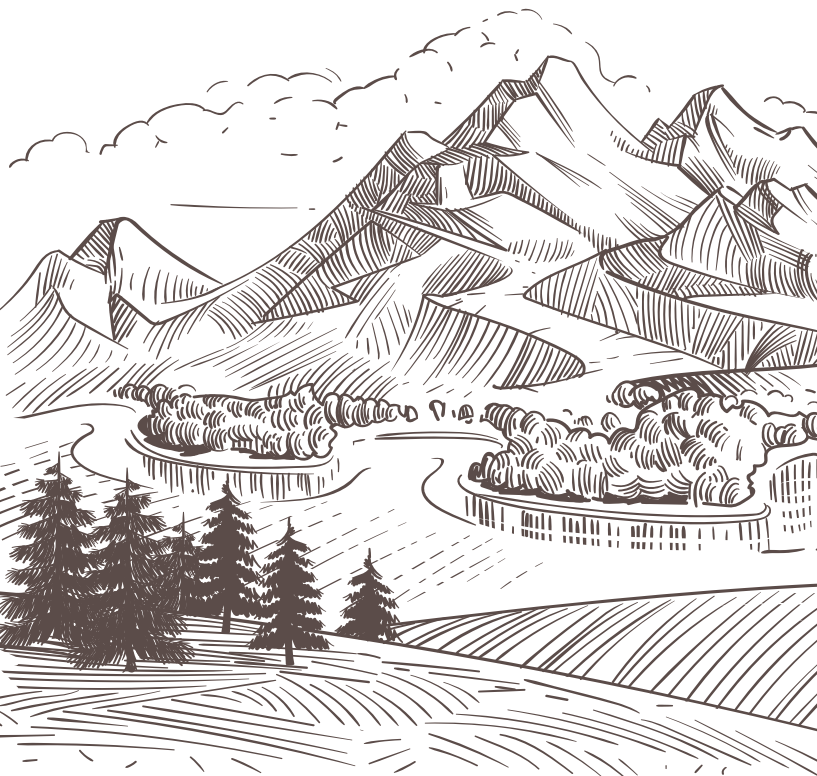
- Israel's conquest of the Promised Land began around 1450 B.C. and lasted approximately 5-7 years.

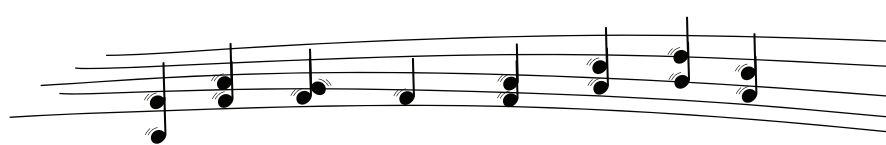
CHARACTERS

- **Joshua** - Moses' long-time assistant. God selected Joshua to lead the Israelites into the Promised Land after Moses' death.
- **Tribes of Ephraim and Manasseh** - Descendants of Ephraim and Manasseh, the two sons of Joseph.

WHERE

- The Israelites were camped at Gilgal (14:6).
- Joshua 16 describes the land allotted to the tribes of Ephraim and Manasseh west of Jordan.





TO CANAAN'S LAND I'M ON MY WAY...

OUTLINE

- THE LAND ALLOTTED TO THE TRIBES OF EPHRAIM AND MANASSEH (16:1-63):
 - + Joshua 16 describes the borders of the land given to the tribes of Manasseh and Ephraim.
 - + Verse 10 tells us the people failed to drive out the Canaanites who lived in Gezer. Instead of driving them out, they made them do forced labor.
 - + This was a problem because God specifically told the Israelites not to allow any of the Canaanites to remain in the land (Deu 20:16-18).

