

JOSHUA 19



WHEN

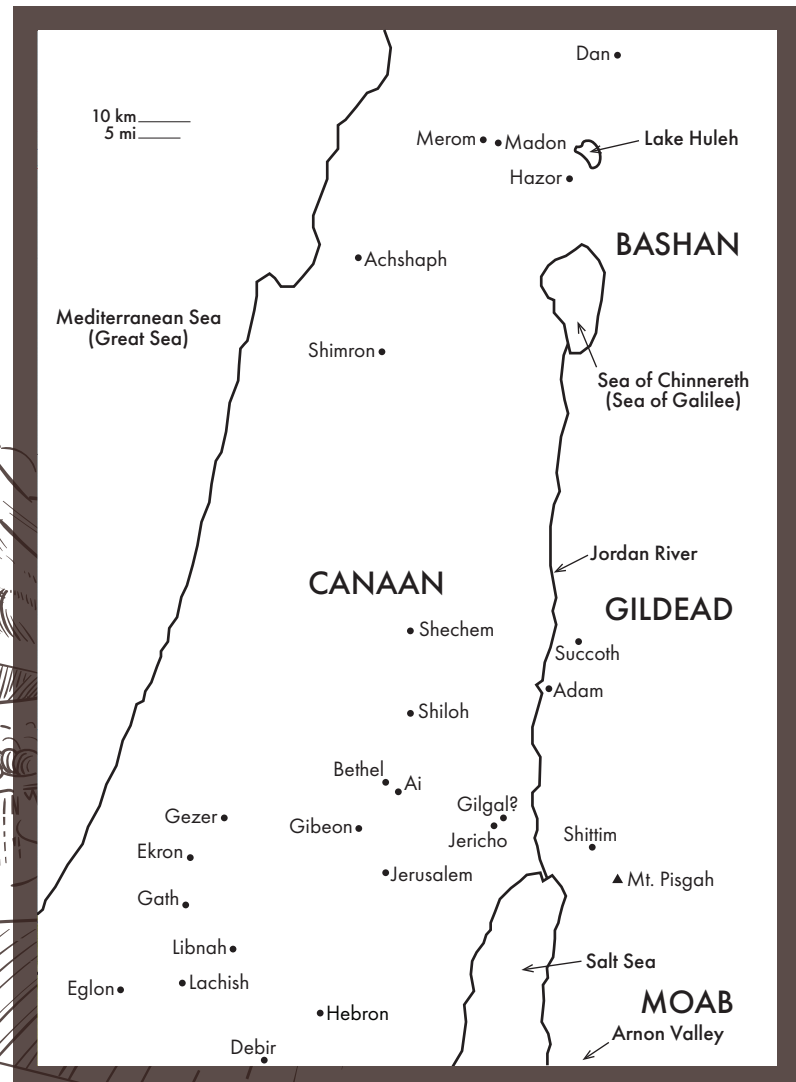
- Israel's conquest of the Promised Land began around 1450 B.C. and lasted approximately 5-7 years.

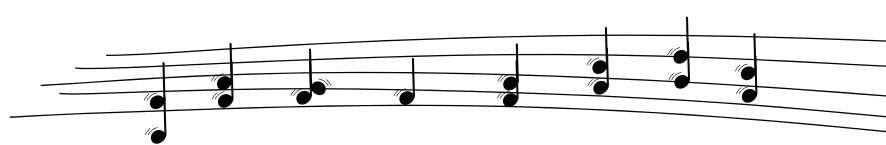
CHARACTERS

- **Joshua** - Moses' long-time assistant. God selected Joshua to lead the Israelites into the Promised Land after Moses' death.
- **Tribes of Simeon, Zebulun, Issachar, Asher, Naphtali, and Dan** - These 6 tribes were the last to receive their land inheritance in the Promised Land.

WHERE

- The Israelites moved their camp away from Gilgal and set up the Tabernacle at Shiloh (18:1).
- From Shiloh, Joshua divided the Promised Land between the tribes by casting lots at the entrance of the Tabernacle (19:51):





TO CANAAN'S LAND I'M ON MY WAY...

OUTLINE

- THE LAND GIVEN TO SIMEON, ZEBULUN, ISSACHAR, ASHER, NAPHTALI, AND DAN (19:1-48):
 - + Joshua 19 describes the land given to the remaining 6 tribes of Israel.
 - + Simeon received a portion of land within Judah's territory because Judah's land was more than they needed.
- LAND GIVEN TO JOSHUA (19:49-51):
 - + The Israelites gave Joshua the city of Timnath-serah in the hill country of Ephraim.
 - + He rebuilt the city and settled in it.

