

JOSHUA 20



WHEN

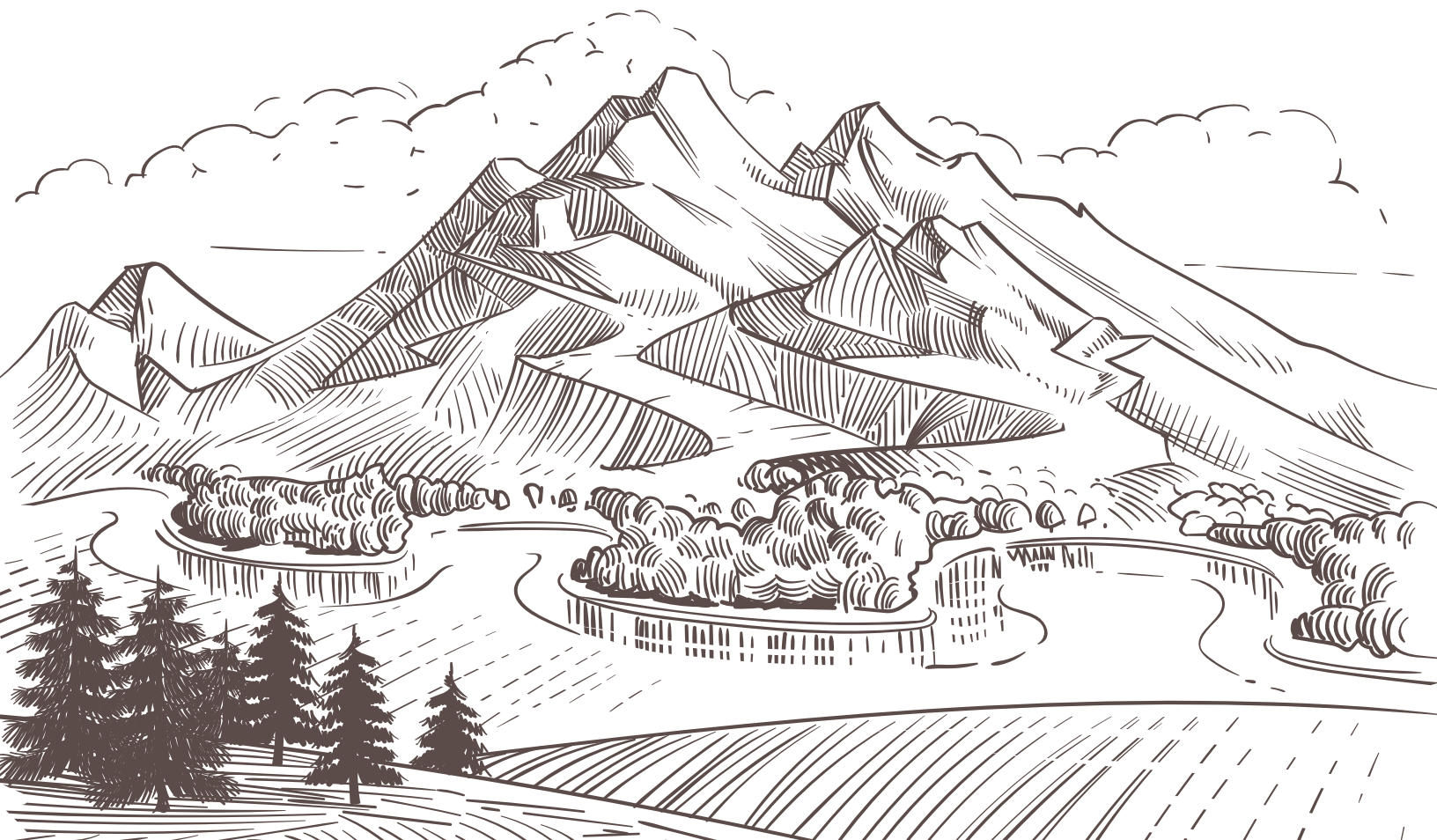
- Israel's conquest of the Promised Land began around 1450 B.C. and lasted approximately 5-7 years.

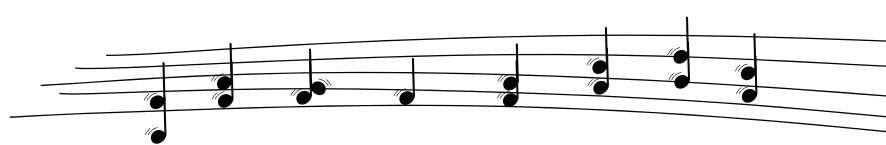
CHARACTERS

- **Joshua** - Moses' long-time assistant. God selected Joshua to lead the Israelites into the Promised Land after Moses' death.
- **Manslayer** - A person who accidentally kills another person.
- **Avenger of Blood** - A person seeking vengeance for the manslaughter of their friend or relative.

WHERE

- Joshua 20 focuses on 6 cities of refuge which were established throughout Israel's land.
- There were 3 cities of refuge west of the Jordan River and 3 cities east of the Jordan.





TO CANAAN'S LAND I'M ON MY WAY...

OUTLINE

- CITIES OF REFUGE (20:1-9):

- + God told Joshua to appoint cities of refuge in the Promised Land.
- + These cities were specifically established to protect manslayers.
- + A person who accidentally killed someone could run to one of these cities and receive protection from the "avenger of blood."
- + You can read more about these cities in Numbers 35.
- + Six cities were established: Kadesh in Naphtali, Shechem in Ephraim, Hebron in Judah, Bezer in Reuben, Ramoth in Gad, and Golan in Manasseh.

